

V 68949

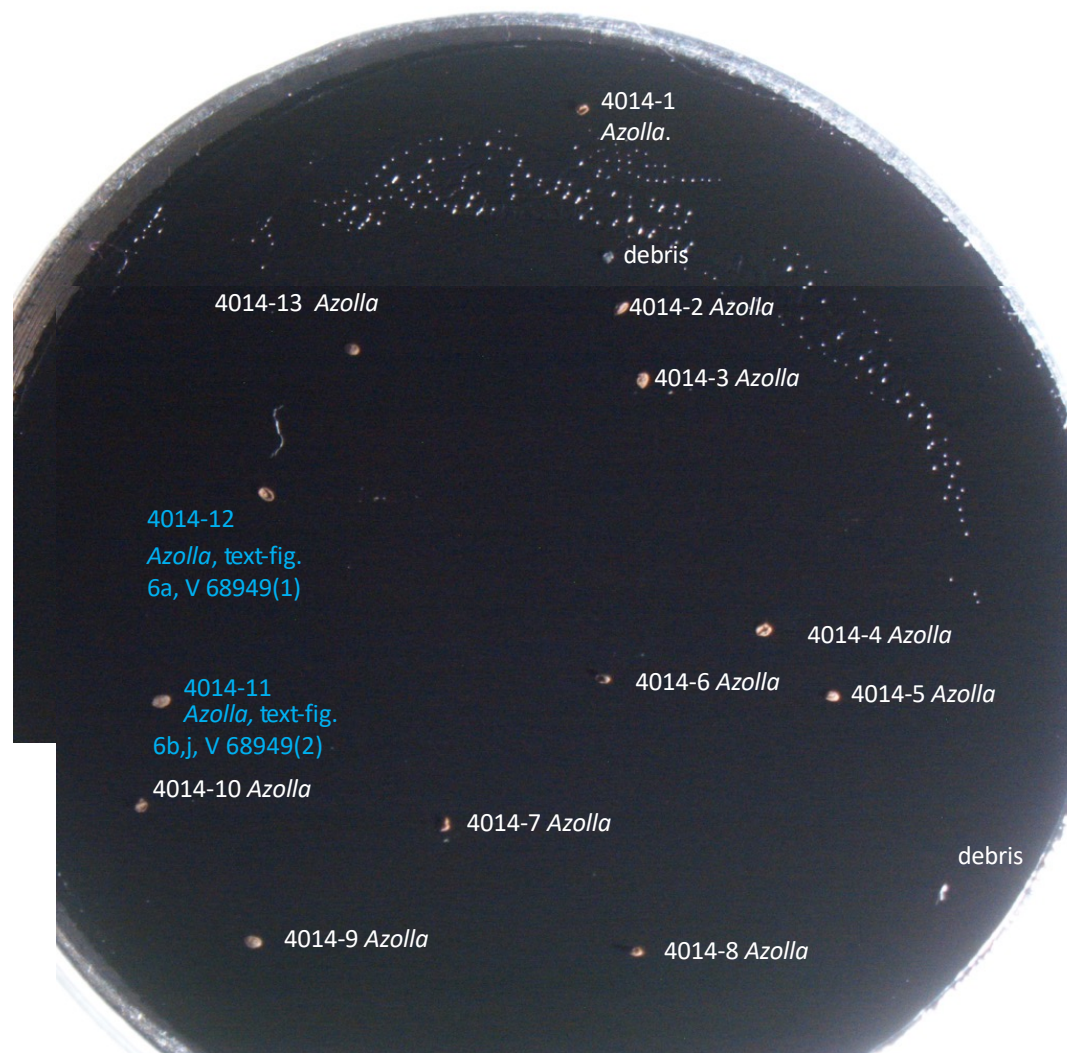
SEM Stub 4014

Mesofossils from TB33 Unit 2.  
Mesofossil fraction resieved  
through 125 microns and the  
material passing through that  
sieve was then sieved again  
through 15 microns. Material  
retained on 15 microns was  
picked.

Mount - Carbon pad.

[Blue text specimens  
illustrated in text figures]

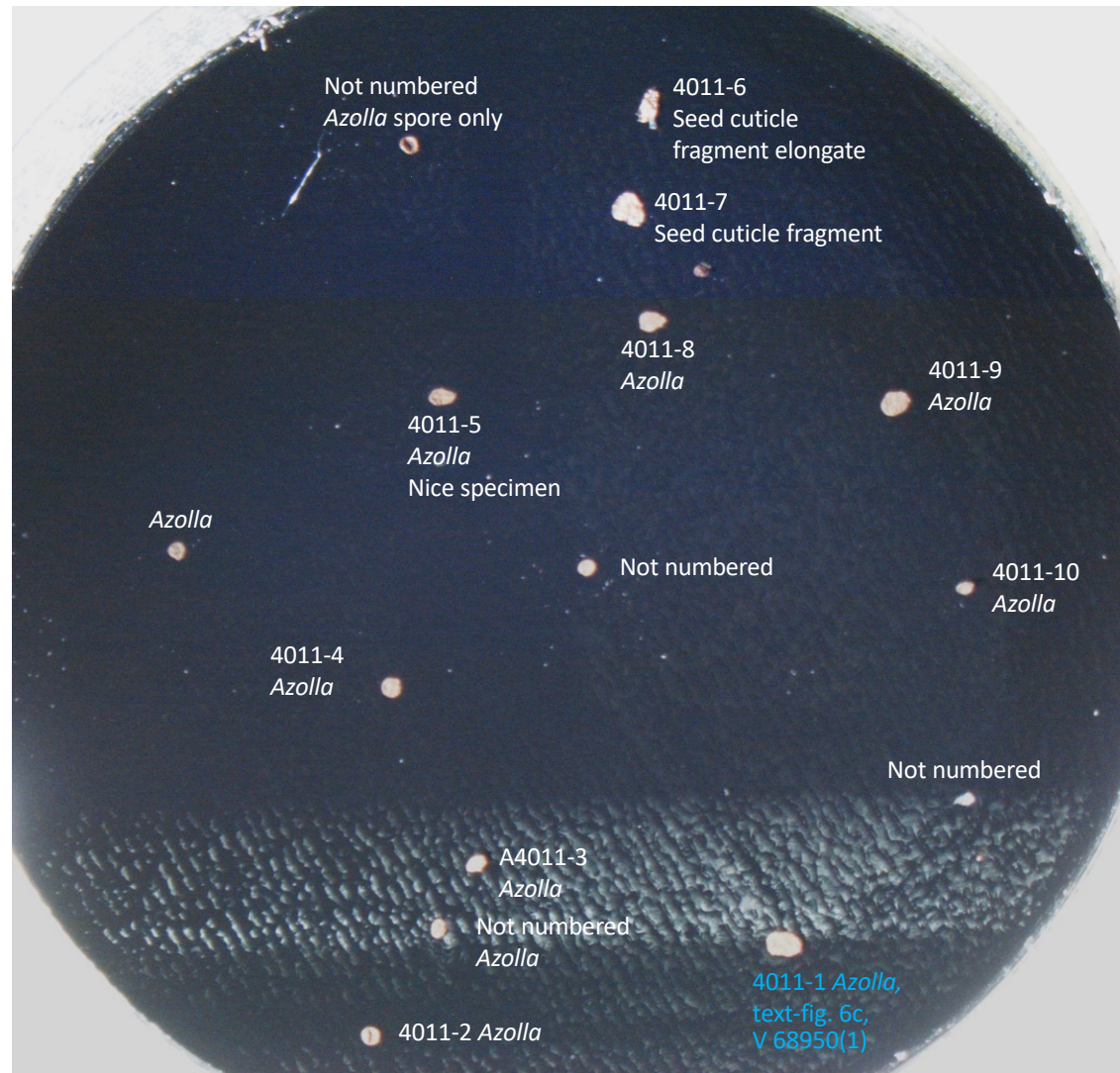
Unfigured specimens are  
interpreted as *Azolla* based on  
presence of filosum. Some are  
broken, some probably  
immature, some are distorted  
through compression.



V 68950

SEM Stub 4011  
Mesofossils from TB33 unit 2  
Mount - Carbon pad

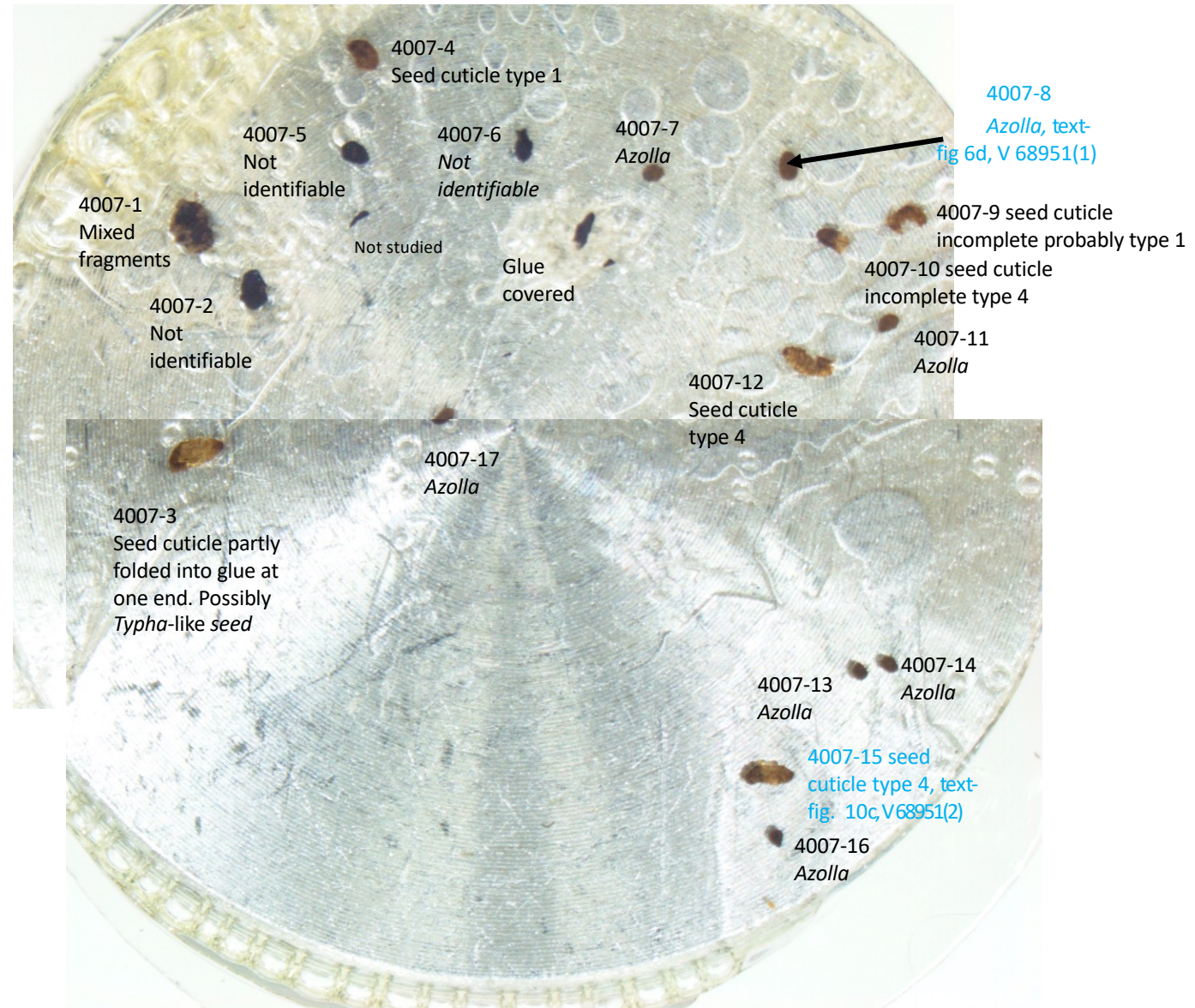
[Blue text specimens  
illustrated in text figures]



V 68951

SEM Stub 4007 Mesofossils  
from TB33 unit 2 Mount -  
Bostik, coverglass, bostik

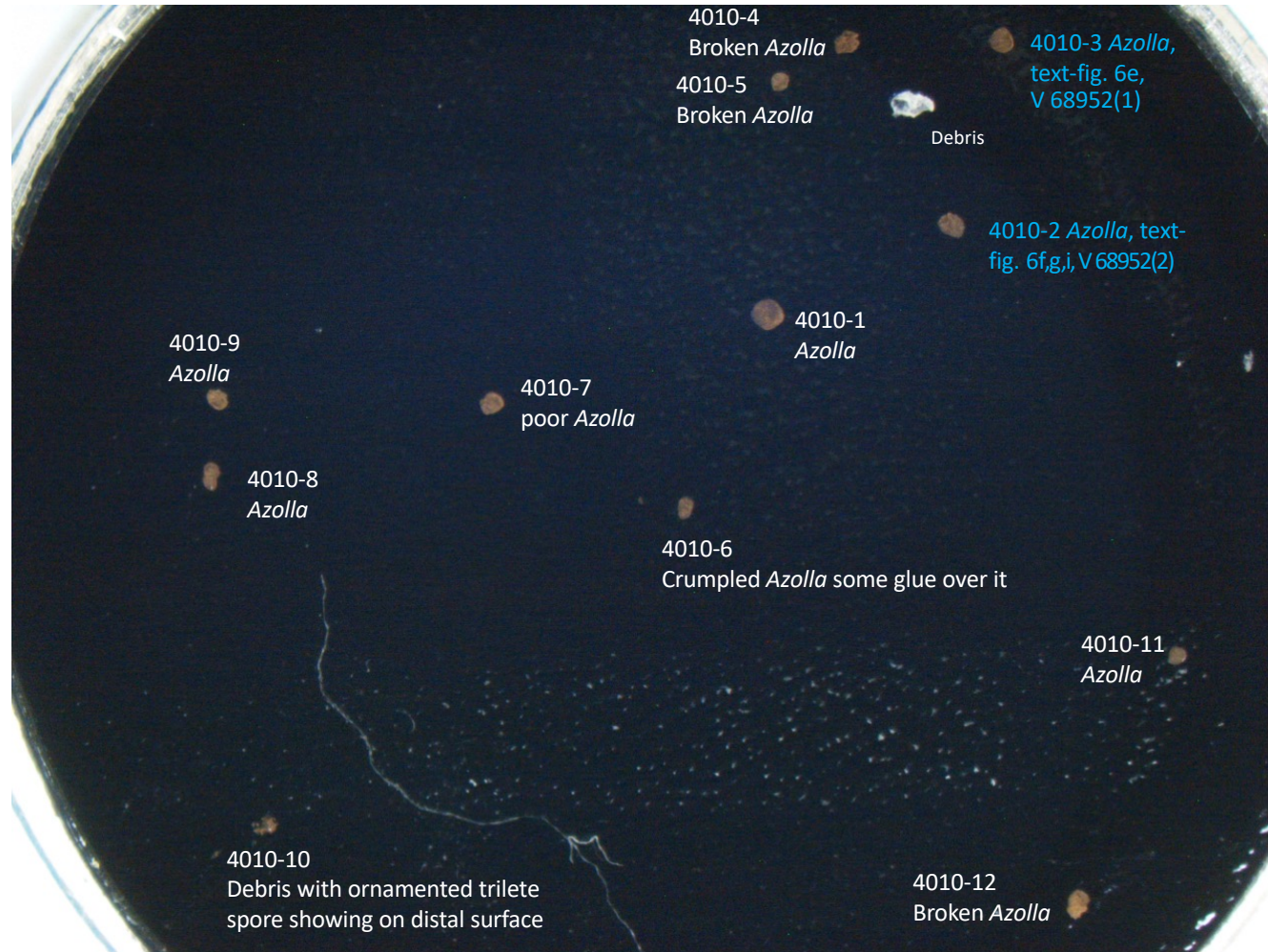
[Blue text specimens  
illustrated in text figures]



V 68952

SEM Stub 4010  
Mesofossils from  
TB33 unit 2 Mount -  
Carbon pad

[Blue text specimens  
illustrated in text figures]



V 68953

Stub 4006

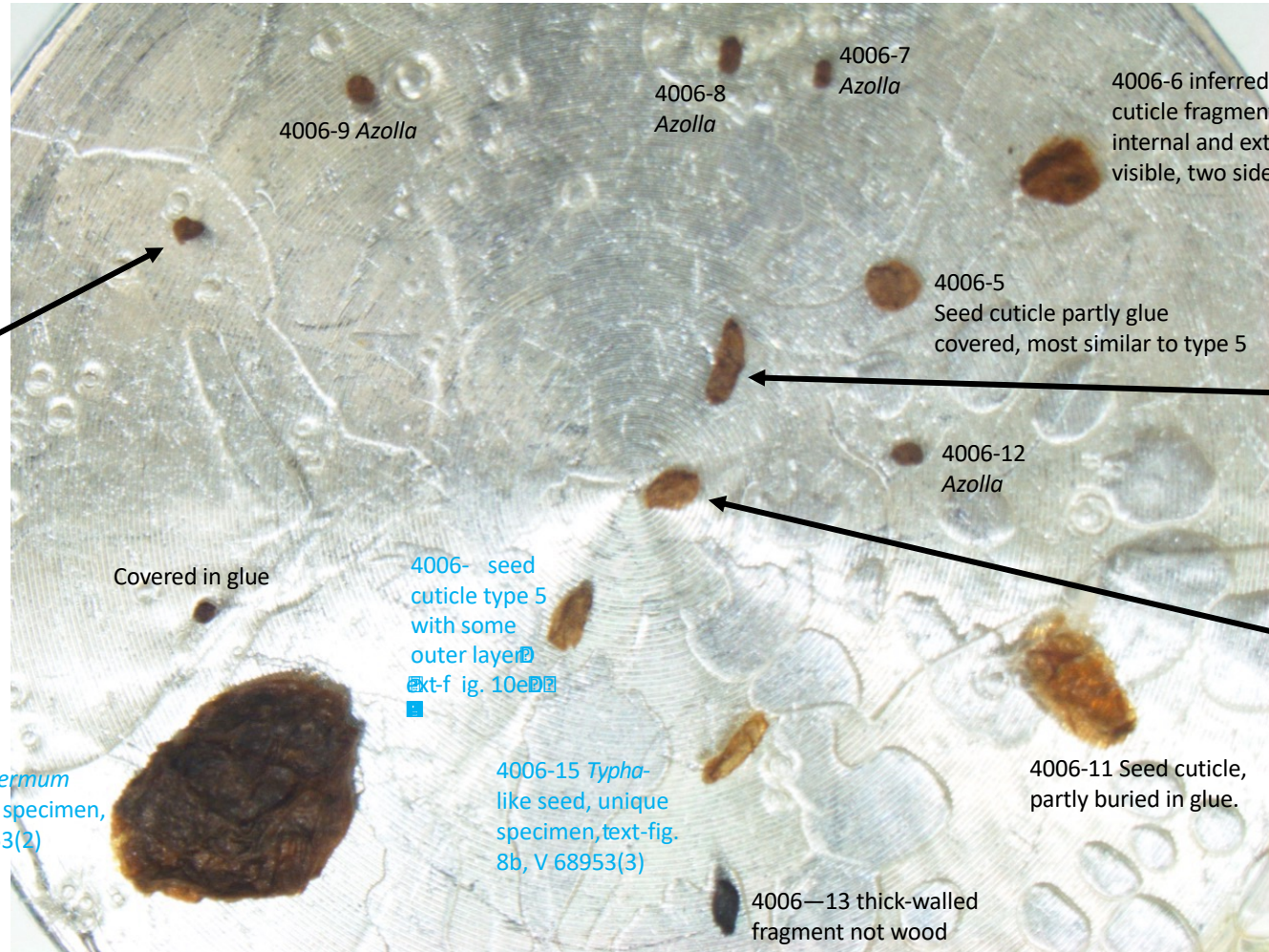
Mesofossils from  
TB33 unit 2

Mount - Bostik,  
coverglass, bostik

[Blue text specimens  
illustrated in text figures]

4006-10, *Azolla*  
megaspore with  
microspore massula  
attached, unique  
example, text-fig. 6h,k,l,  
V 68953(1)

4006-1 *Rhamnospermum*  
*bilobatum*, unique specimen,  
text-fig. 8a, V 68953(2)



4006-6 inferred seed  
cuticle fragment  
internal and external  
visible, two sides visible

4006-5  
Seed cuticle partly glue  
covered, most similar to type 5

4006-4  
seed cuticle  
type 4,  
text-fig. 10d,  
V 68953(4)

4006-12  
*Azolla*

V 68953(6)  
Seed cuticle  
type 5 with  
some outer  
layer.  
Text-fig. 10f

Covered in glue

4006- seed  
cuticle type 5  
with some  
outer layer  
text-fig. 10e

4006-15 *Typha*-  
like seed, unique  
specimen, text-fig.  
8b, V 68953(3)

4006-11 Seed cuticle,  
partly buried in glue.

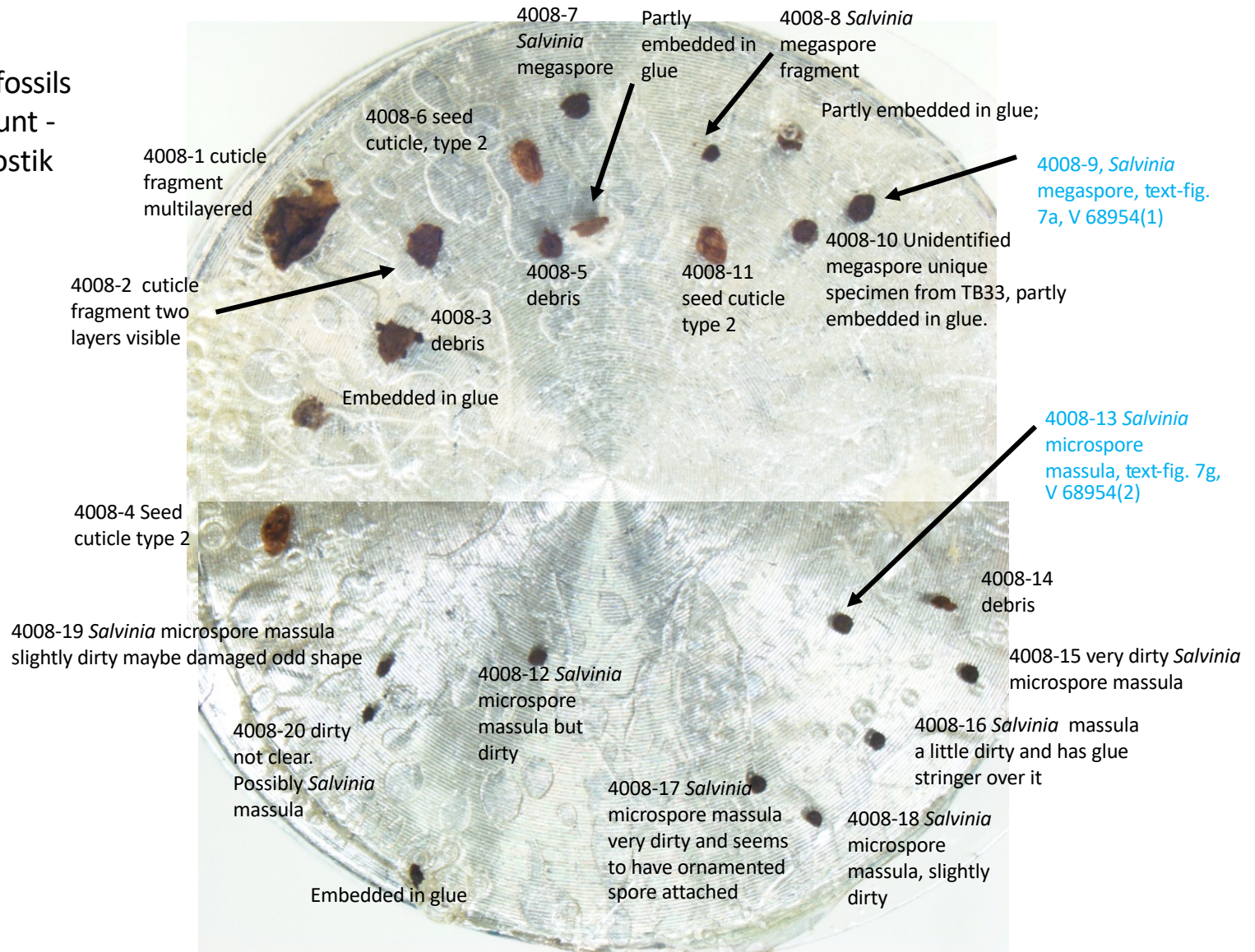
4006-13 thick-walled  
fragment not wood

4006-14 Just off this stub photo *Azolla* broken at spore end

V 68954

SEM Stub 4008 Mesofossils  
from TB33 Unit 3 Mount -  
Bostick, coverglass, bostik

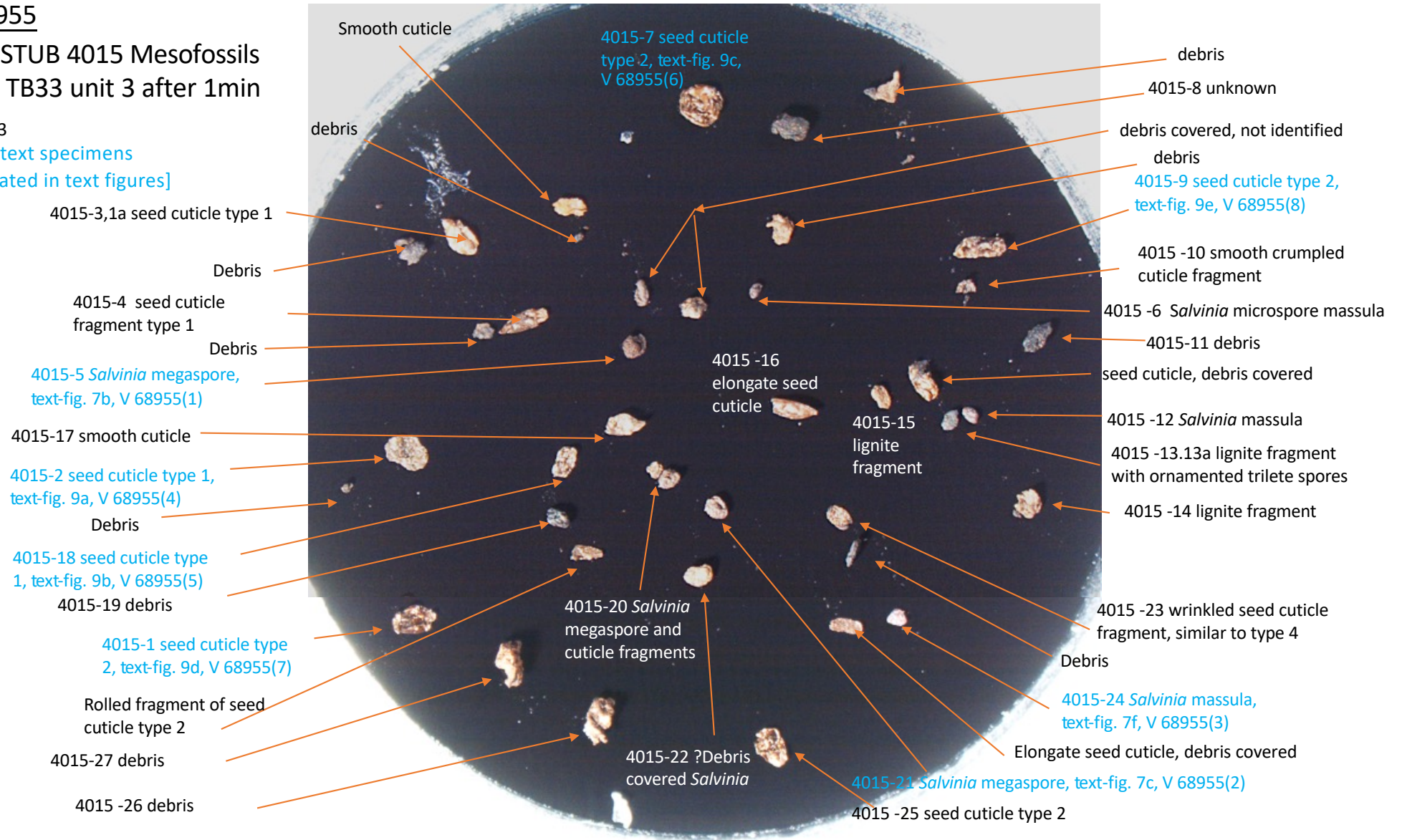
[Blue text specimens  
illustrated in text figures]



V 68955

SEM STUB 4015 Mesofossils  
from TB33 unit 3 after 1min  
HNO<sub>3</sub>

[Blue text specimens  
illustrated in text figures]



V 68956

SEM STUB 4016

Mesofossils from TB33 Unit 3  
(after 1 min HNO<sub>3</sub>)

specimens in central area next page

[Blue text specimens

illustrated in text figures]

4016-21 seed cuticle  
type 3, text-fig. 10b,  
V 68956(6)

4016-22 *Salvinia* microspore massula

4016-23 *Salvinia* microspore massula

4016-24 debris

4016-25 *Salvinia* microspore  
massula, text-fig. 7h, V 68956(3)

Debris

4016-26 *Salvinia* microspore massula

4016-27 *Salvinia* microspore  
massula and seed cuticle type 3

Debris

4016-28 *Salvinia*  
microspore massula,  
text-fig. 7i, V 68956(4)

crumpled cuticle

4016-11 seed cuticle type 3

4016-12 *Salvinia*  
microspore massula

4016-10 possible *Salvinia*  
microspore massula, debris covered

unidentified

4016-9 seed cuticle type 3,  
text-fig. 10a, V 68956(5)

crumpled cuticle

smooth cuticle fragment

4016-8 wrinkled smooth cuticle

4016-7 *Salvinia* microspore  
massula, text-fig 7e, V 68956(2)

4016-5 *Salvinia* microspore massula

4016-6 crumpled seed cuticle some similarity  
to type 3

4016-16 *Salvinia* fragment distal view megaspore

4016-17 *Salvinia* microspore massula

4016-3 possible *Salvinia* massula

4016-4 *Salvinia*  
microspore massula

4016-2 unidentified

4016-1 curled seed cuticle type 1

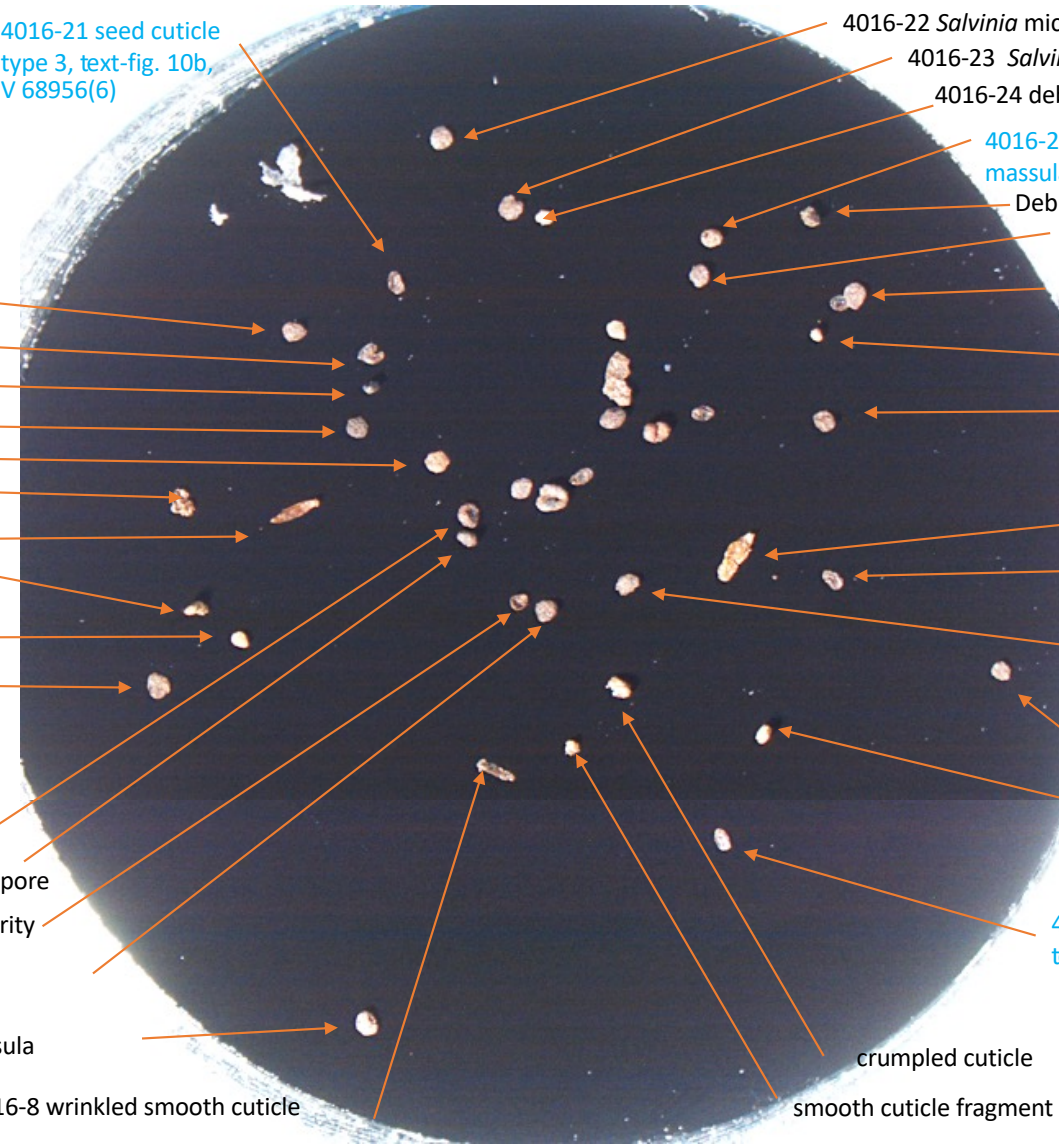
Debris  
crumpled cuticle

4016-18 *Salvinia* massula

*Salvinia* microspore massula fragment

4016-19 seed cuticle type 3 split open

4016-20 *Salvinia* microspore massula





V 68956

SEM STUB 4016

Mesofossils from

TB33 unit 3 (after 1 min HNO<sub>3</sub>)

Detail of central part of stub

[Blue text specimens  
illustrated in text figures]

